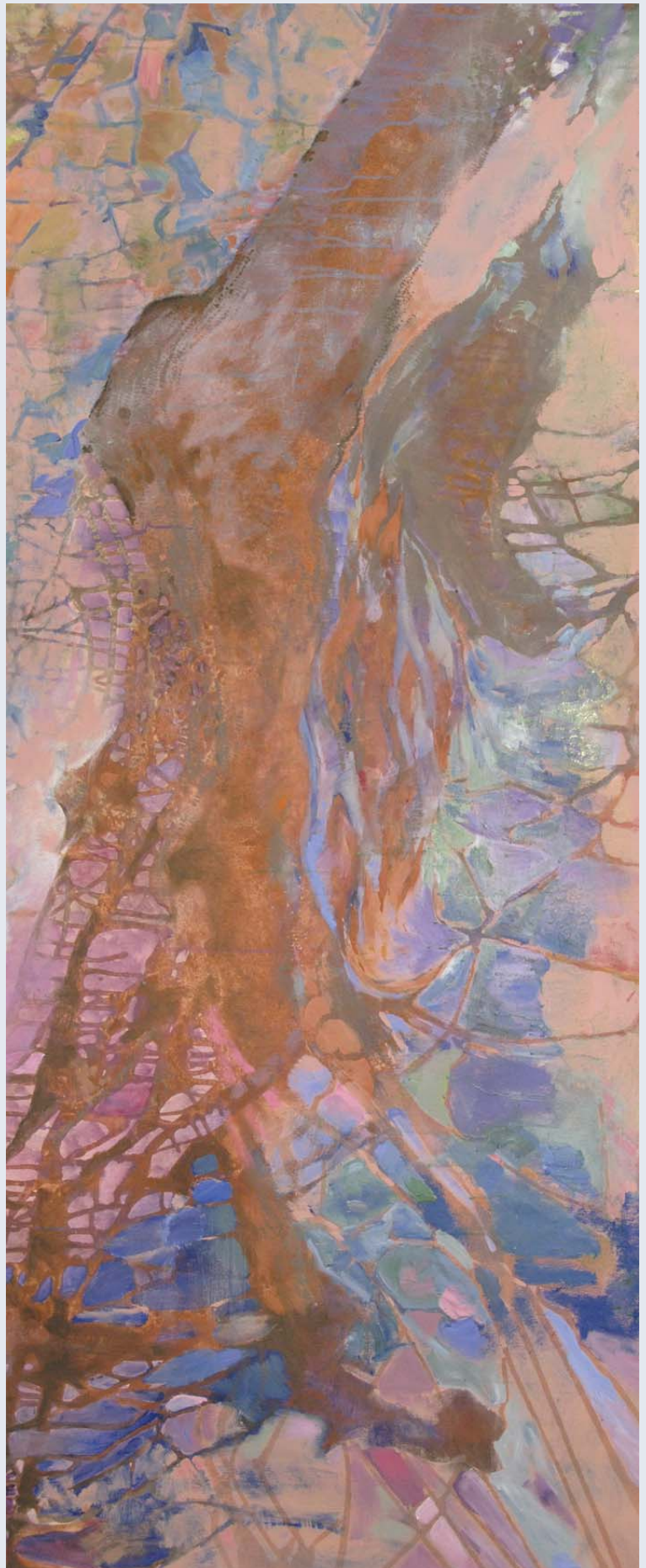


# RIVER

A collaborative mural



# RIVER

A collaborative mural



“There is a certain magic about the Hudson River, something that captures the imagination and creates a sense of possibility. The river has personality, energy, and resplendent beauty, a kind of magnetism that attracts visionary people and inspires them to do extraordinary things. That is its nature and dispositiona. The Hudson nurtures those who are attuned to its voice.”

-Francis Dunwell

Prologue from her book “The Hudson: America’s River”

---

An Exhibition of works inspired by the Hudson River  
created by members of Long Reach Arts, Hudson Valley artist cooperative.

Mill Street Loft Gallery

September 21- October 31, 2009

45 Pershing Avenue, Poughkeepsie, NY

[www.longreacharts.com](http://www.longreacharts.com)









Long Reach Arts members live and work on the banks of the fabled Hudson River. As part of the celebration marking the 400th anniversary of the river's exploration by the English navigator whose name it bears, the artist cooperative was invited to mount an exhibition. Artists have always been inspired to create works that reflect the river's power, beauty, and the qualities that make it unique, but for this Quadricentennial event, the artists of Long Reach Arts were moved to do something unusual. They collaborated on a single large painting that interprets what they, as group, perceive to be the river's essence. The fact that people who have spent their professional lives working alone were willing to come together to create a major painting by working side-by-side with other artists is testimony to the allure of the Hudson and the fascination it exerts. This catalogue introduces viewers to all the individual members of the Long Reach Arts cooperative and their work, and documents the making of "River."

Elayne Seaman  
LRA President, Emeritus

© 2009 LongReachArts

All rights reserved.

No part of this publication may be reproduced in any form by electronic or mechanical means without written permission from the publishers, LongReachArts.

All Photographs

©Susan Fowler-Gallagher and ©Claudia Gorman

Catalogue design and production by Marlene Wiedenbaum  
Editors: Staats Fasoldt, Carol Pepper-Cooper  
and Elayne Seaman

Printed by psprint.com

## :: Hudson Valley's premier Artist Cooperative

In the spring of 1982, a group of professional visual artists working in a variety of media and styles met to explore the idea of forming a cooperative gallery. Mutual respect for each other's works and recognition of the benefits in sharing ideas and experience brought them together.

When plans were being discussed for the future, the Mid-Hudson Arts and Science Center (MASC) housed in the old City Hall, (now the headquarters of the Dutchess Commissioner of Jurors,) invited the newly formed cooperative to present its first exhibit in MASC's large gallery for the duration of the summer. Inspired by the idea of beginning with a "group exhibit in the summer" the name "Summergroup" was unanimously adopted.

## :: Twenty-seven years of creativity and cooperation

The quality of the work and the enthusiastic response from the public prompted MASC to offer its smaller main floor gallery to Summergroup as its home. Summergroup remained at the MASC facility until June, 1991, mounting new exhibits every six weeks and welcoming large numbers of the public to its openings and programs.

Since 1991, with the exception of rented gallery space at the Cunneen-Hackett Cultural Center from May, 1995 through July, 1996, Summergroup's exhibits have been primarily featured in venues throughout the Mid-Hudson Valley and in New York City, including commercial, non-profit organizations, and college galleries on both sides of the Hudson River, on the east bank from Cold Spring to the city of Hudson, and as far west as Middletown and Ellenville to Windham.



*The river is wide, I can't cross over...nor have I wings, with which to fly...*

## :: Long Reach Arts today

Today, this well known Arts Cooperative remains an important part of the visual arts in the Hudson Valley Region. In addition to achieving recognition as a group, individual members' works are well known in the valley and beyond. They are represented in both public and private collections in the United States, Europe and Israel.

In 2007, to celebrate its twenty-fifth anniversary, the Group decided to change its name. Proud of its location near the Hudson River, and knowing that it has, from West Point northward, what sailors call a "long reach," a great length of river that can be sailed without having to tack, and to also celebrate the Group's outreach welcoming a number of the finest artists in the Valley as members of the Cooperative, it adopted the name Long Reach Arts. The Group looks back with pride on its many years of achievement, and looks forward with hope to many more years of its art reaching out into the community.

## :: Members

Mildred Cohen, Cynthia Dill, Staats Fasoldt, Stacie Flint, Susan Fowler-Gallagher, Jose Gomez, Claudia Gorman, Trina Greene, Robert Hastings, Carol Loizides, Ellen Metzger O'Shea, Sherrill Meyers-Nilson, Carol Pepper-Cooper, Nancy Scott, Elayne Seaman, Michelle Squires, Marlene Wiedenbaum, PSA



*Build me a boat that will carry two, and both shall row, my love and I...*



## Special thanks

to Cynthia Dill and Larry Kopczak for generously sharing her studio and their home for three months during 2008/09.

## Acknowledgements

### *Photographers*

Susan Fowler-Gallagher and Claudia Gorman for documenting the project, a generous contribution to this catalogue.

### *Videographer*

Dick Crenson

### *Gallery*

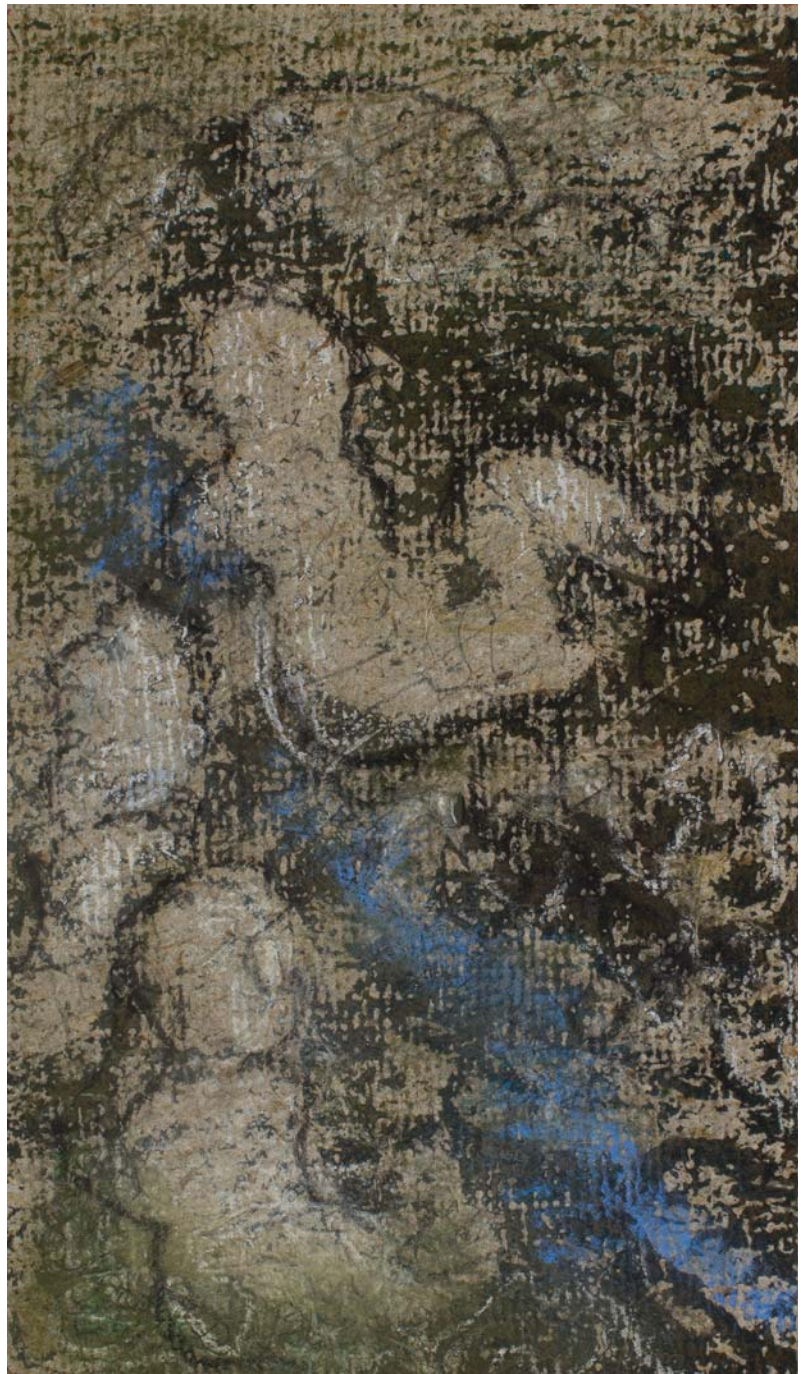
Mill Street Loft Gallery





Why a Mural? I went to the studio to see what it was all about. The earlier painted canvas hung large and already showed the configuration of the River. After adding my various brush strokes of blue and green to a left hand corner, I sat back to observe the other artists as they covered different areas of the canvas with their brush. When the warm winter sun entered through the studio windows, a haunting likeness of the ghosts and myths that have followed this River began to arise in my thoughts. I then looked at the canvas anew, saw the artists painting the canvas, extending and elaborating the colors and then realized that this indeed was a work composed of the individual sensibilities of all; that necessitates a mural-sized painting.

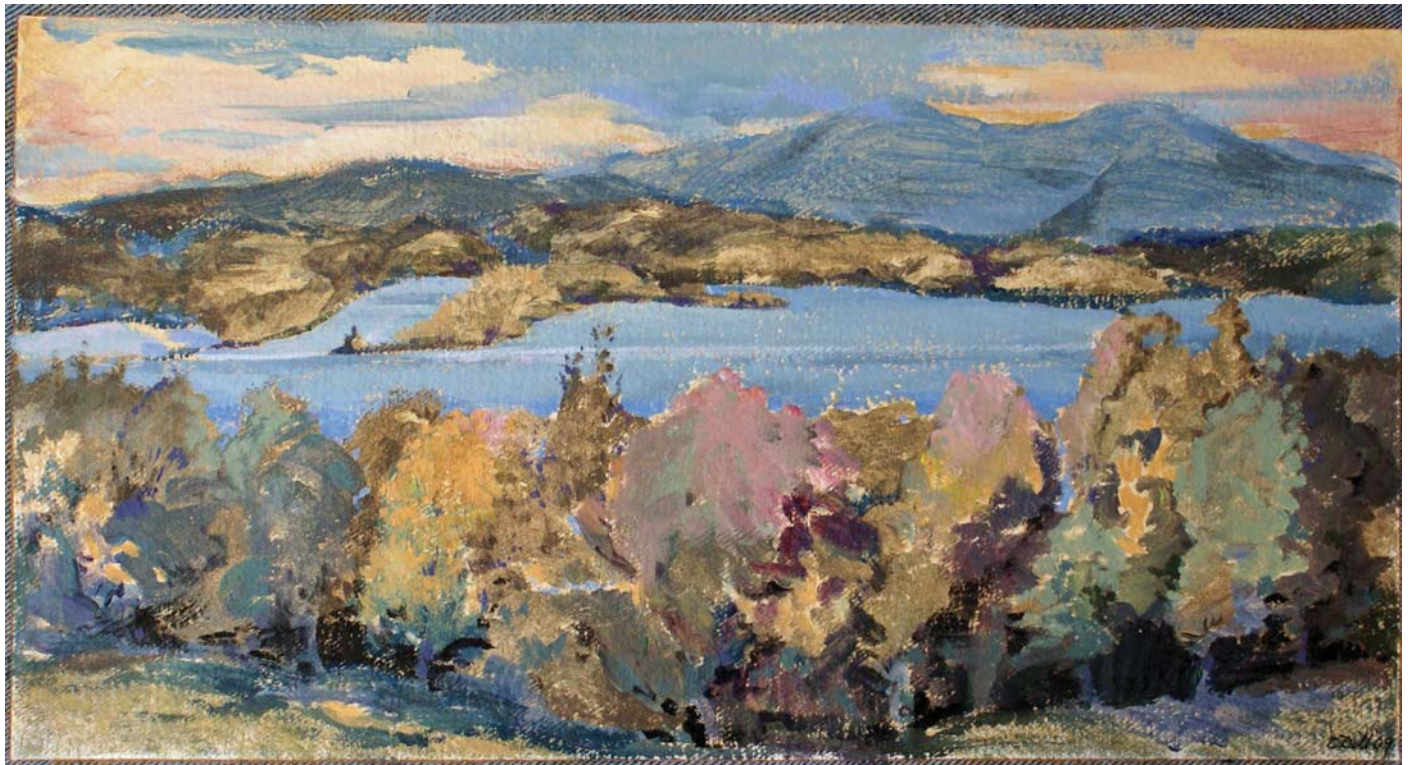
- Mildred Cohen



Restless Shades Hovering the River  
/Mixed Media/ 7" x 4"

(left) The Hosts of Pollepel  
/Mixed Media/ 5 1/2" x 8 1/2"





(above) Saugerties from Rolling Stone Property /  
Acrylic on recycled bluejeans  
8 5/8" x 16 3/8"

Mouth of the Rondout  
Acrylic on recycled bluejeans  
8 1/8" x 16 3/8"



Creating alone has its own challenges, but creating with others brings to bear the need for compromise, between differences in opinion and style and personality. Working together on LRA's collaboration canvas felt to me like using two different palettes and mediums - one for the exterior painting, and one for the interior push and pull of so many different communication challenges - and switching on and off between palettes! The tension was unified by a fabulous shared excitement of everyone involved. I experienced a mix of many feelings: trepidation, euphoria, frustration and satisfaction. In the end, it gave me a sense of greater closeness and trust with my fellow LRA artists.

- Cynthia Dill









Smith's Landing /Watercolor/ 11"x14"

Some very pleasurable Artistic experiences have come to me through collaborative work. When my daughter was young I often painted with her and her friends: sitting on the floor with tempera paint and playing pure and simple. This experience with the Long Reach Arts "River" Collaboration was also pure pleasure.

The artists involved in this case were all adults and experienced, with strong opinions. Yet they shared and played and made room for others ideas. They sat on the floor and experienced with four year old delight.

It actually dosen't get better than four year old delight.

- Staats Fasoldt









Red Wine Goes With This Fish / Oil / 24"x30"; (below) Red Rubber Ball / Oil/ 24"x30"

The LRA Hudson River mural was already substantially materializing when I arrived at Cindy's studio to make my personal contribution. I saw this non-objective work already owning strong elements of curling, foaming river energy, utilizing pronounced, yet subtle color, mostly blues,

tans and browns. When I noticed a small suggestion of light red peeking through, and since color is my middle name, right away I knew that I had to deepen it. I enjoyed the experience of brushing on the deep, vibrant red paint in this small section, marking and trailing the paint on what had already been begun, but now there was no question that red was here! Then I was finished. I left it to my fellow artists to interpret that red area for themselves, and incorporate it into what developed into the complete, resolved piece - Long Reach Art's Hudson River.



- Stacie Flint